

## **Garnet Rd between Cedar Hill Rd and Garnet PI**

**November 22, 2020 To November 27, 2020**



The data presented here is for information purposes only and should not be considered authoritative for construction, geotechnical, engineering, navigational, legal, or other site-specific uses. The information shared is owned by the Transportation Division of the Engineering Department at the District of Saanich. Accuracy is not guaranteed.

Start Date: 23-Nov-20  
 Start Time: 18:01  
 Station ID: C0026-01

**Location 1: Garnet Rd between Cedar Hill Rd and Garnet Pl**

Note:

DATE:	November 23, 2020		November 24, 2020		November 25, 2020		November 26, 2020		November 27, 2020		WK AVG		WK AVG	HOURLY
	MON		TUE		WED		THURS		FRI		EB	WB	CH 1+2	%
Time:	EB	WB	EB	WB	EB	WB	EB	WB	EB	WB	EB	WB		
12-1 AM	2	2	0	0	0	0	2	1			1	1	2	0.1%
1-2 AM	1	2	1	1	2	2	2	2			2	2	3	0.2%
2-3 AM	0	0	1	1	0	1	0	1			0	1	1	0.1%
3-4 AM	0	3	0	0	0	0	0	1			0	1	1	0.1%
4-5 AM	2	0	0	2	1	0	0	1			1	1	2	0.1%
5-6 AM	4	9	2	6	2	5	4	7			3	7	10	0.6%
6-7 AM	18	14	13	10	15	15	12	9			15	12	27	1.7%
7-8 AM	42	24	47	45	48	26	47	33			46	32	78	5.0%
8-9 AM	63	75	95	79	81	71	86	65			81	73	154	9.8%
9-10 AM	58	54	63	62	63	66	55	60			60	61	120	7.6%
10-11 AM	54	73	51	50	44	62	68	101			54	72	126	8.0%
11-12 PM	64	68	42	58	46	79	63	79			54	71	125	7.9%
12-1 PM	46	58	45	67	54	72	59	59			51	64	115	7.3%
1-2 PM	60	84	59	68	60	69	65	65			61	72	133	8.4%
2-3 PM	65	84	62	76	57	85	81	84			66	82	149	9.4%
3-4 PM	63	93	64	95	69	96	60	94			64	95	159	10.1%
4-5 PM	43	80	53	69	53	76	59	89			52	79	131	8.3%
5-6 PM	38	46	34	42	38	64	39	54			37	52	89	5.6%
6-7 PM	19	35	30	34	22	27	29	38			25	34	59	3.7%
7-8 PM	16	24	18	15	11	18	12	31			14	22	36	2.3%
8-9 PM	15	16	9	16	7	13	16	23			12	17	29	1.8%
9-10 PM	5	10	8	5	4	4	9	7			7	7	13	0.8%
10-11 PM	7	3	0	8	3	6	3	6			3	6	9	0.6%
11-12 AM	1	4	0	4	2	6	2	7			1	5	7	0.4%
<b>LANES</b>	<b>686</b>	<b>861</b>	<b>697</b>	<b>813</b>	<b>682</b>	<b>863</b>	<b>773</b>	<b>917</b>			<b>710</b>	<b>864</b>	<b>1573</b>	<b>100.0%</b>
<b>TOTAL</b>	<b>1547</b>		<b>1510</b>		<b>1545</b>		<b>1690</b>				<b>1580</b>			
	MON		TUE		WED		THURS		FRI		WK AVG			

PEAK HOUR					TOTAL VEHICALS-PEAK PERIODS		2 HOUR PEAK INTERVALS					
MAX. 7 - 9 am PEAK HOUR	154	⇒	9.8%	between	8-9 AM	691	⇒	6 HR TOTAL	<b>2 HR AM (7 - 9 AM)</b>			
MAX. 7 - 11 am PEAK HOUR	154	⇒	9.8%	between	8-9 AM	451	⇒	4 HR TOTAL	VEH / HR	VEH / 2HR	2 HR %	
									7-8 AM	78	232	14.7%
									8-9 AM	154		
MAX. 11 am - 1 pm PEAK HOUR	125	⇒	7.9%	between	11-12 PM	<b>24 HOUR FACTORS</b>						
MAX. 11 am - 3 pm PEAK HOUR	149	⇒	9.4%	between	2-3 PM							
MAX. 4 - 6 pm PEAK HOUR	131	⇒	8.3%	between	4-5 PM							
MAX. 3 - 6 pm PEAK HOUR	159	⇒	10.1%	between	3-4 PM	2.28	⇒	6-24 HR FACT.	<b>2 HR NOON (11 - 1 PM)</b>			
						3.49	⇒	4-24 HR FACT.	VEH / HR	VEH / 2HR	2 HR %	
									11-12 PM	125	240	15.2%
									12-1 PM	115		
									<b>2 HR PM (4 - 6 PM)</b>			
									VEH / HR	VEH / 2HR	2 HR %	
									4-5 PM	131	219	13.9%
									5-6 PM	89		

Garnet Rd between Cedar Hill Rd and Garnet PI

Westbound

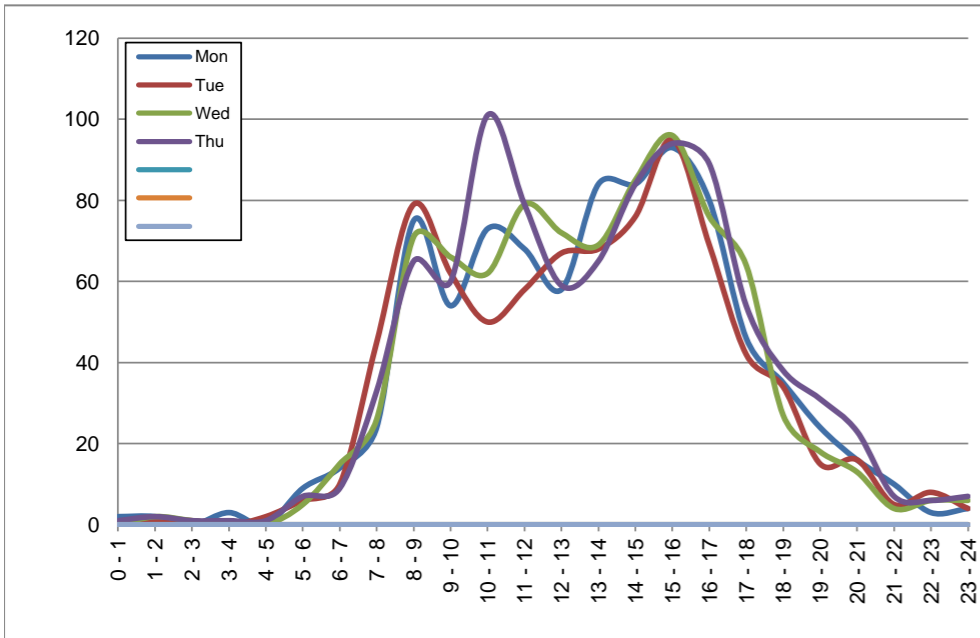
November 23, 2020 to November 26, 2020

Hourly Volumes

Time Period	Mon	Tue	Wed	Thu			
	Nov 23	Nov 24	Nov 25	Nov 26			
0 - 1	2	0	0	1			
1 - 2	2	1	2	2			
2 - 3	0	1	1	1			
3 - 4	3	0	0	1			
4 - 5	0	2	0	1			
5 - 6	9	6	5	7			
6 - 7	14	10	15	9			
7 - 8	24	45	26	33			
8 - 9	75	79	71	65			
9 - 10	54	62	66	60			
10 - 11	73	50	62	101			
11 - 12	68	58	79	79			
12 - 13	58	67	72	59			
13 - 14	84	68	69	65			
14 - 15	84	76	85	84			
15 - 16	93	95	96	94			
16 - 17	80	69	76	89			
17 - 18	46	42	64	54			
18 - 19	35	34	27	38			
19 - 20	24	15	18	31			
20 - 21	16	16	13	23			
21 - 22	10	5	4	7			
22 - 23	3	8	6	6			
23 - 24	4	4	6	7			
<b>Day Total</b>	<b>861</b>	<b>813</b>	<b>863</b>	<b>917</b>			

15-Minute Volumes

Time Start	Mon	Tue	Wed	Thu			
	Nov 23	Nov 24	Nov 25	Nov 26			
0:00	0	0	0	1			
0:15	1	0	0	0			
0:30	0	0	0	0			
0:45	1	0	0	0			
1:00	1	0	0	0			
1:15	0	0	0	0			
1:30	1	1	1	2			
1:45	0	0	1	0			
2:00	0	0	0	0			
2:15	0	0	0	0			
2:30	0	0	1	0			
2:45	0	1	0	1			
3:00	1	0	0	0			
3:15	0	0	0	0			
3:30	0	0	0	1			
3:45	2	0	0	0			
4:00	0	0	0	0			
4:15	0	2	0	1			
4:30	0	0	0	0			
4:45	0	0	0	0			
5:00	3	0	0	0			
5:15	3	2	1	1			
5:30	1	2	1	4			
5:45	2	2	3	2			
6:00	1	1	1	0			
6:15	2	0	6	0			
6:30	6	6	6	5			
6:45	5	3	2	4			
7:00	4	9	6	5			
7:15	5	8	7	4			
7:30	4	10	2	7			
7:45	11	18	11	17			
8:00	5	15	10	10			
8:15	20	20	18	17			
8:30	20	21	12	20			
8:45	30	23	31	18			
9:00	14	13	15	10			
9:15	10	17	16	14			
9:30	14	16	21	16			
9:45	16	16	14	20			
10:00	18	13	18	28			
10:15	21	9	18	20			
10:30	17	14	8	26			
10:45	17	14	18	27			
11:00	16	9	17	28			
11:15	21	21	21	18			
11:30	13	19	24	20			
11:45	18	9	17	13			
12:00	16	21	21	16			
12:15	13	14	17	15			
12:30	16	6	12	11			
12:45	13	26	22	17			
13:00	21	18	19	11			
13:15	19	14	22	24			
13:30	22	19	17	14			
13:45	22	17	11	16			
14:00	22	12	15	22			
14:15	27	12	18	22			
14:30	21	29	26	20			
14:45	14	23	26	20			
15:00	17	26	18	20			
15:15	21	29	25	21			
15:30	29	19	37	24			
15:45	26	21	16	29			
16:00	28	13	18	24			
16:15	21	19	23	26			
16:30	15	13	20	24			
16:45	16	24	15	15			
17:00	15	10	26	17			
17:15	11	15	14	16			
17:30	10	9	14	7			
17:45	10	8	10	14			
18:00	13	10	12	9			
18:15	10	12	6	9			
18:30	6	4	6	9			
18:45	6	8	3	11			
19:00	5	3	5	6			
19:15	7	4	7	13			
19:30	4	4	4	7			
19:45	8	4	2	5			
20:00	5	2	5	10			
20:15	4	5	1	4			
20:30	5	4	1	5			
20:45	2	5	6	4			
21:00	4	1	3	1			
21:15	1	2	0	4			
21:30	4	2	0	1			
21:45	1	0	1	1			
22:00	3	2	2	2			
22:15	0	2	0	2			
22:30	0	1	4	2			
22:45	0	3	0	0			
23:00	1	0	2	2			
23:15	2	2	2	3			
23:30	1	1	1	0			
23:45	0	1	1	2			



Site notes:

**Garnet Rd between Cedar Hill Rd and Garnet PI**

Eastbound

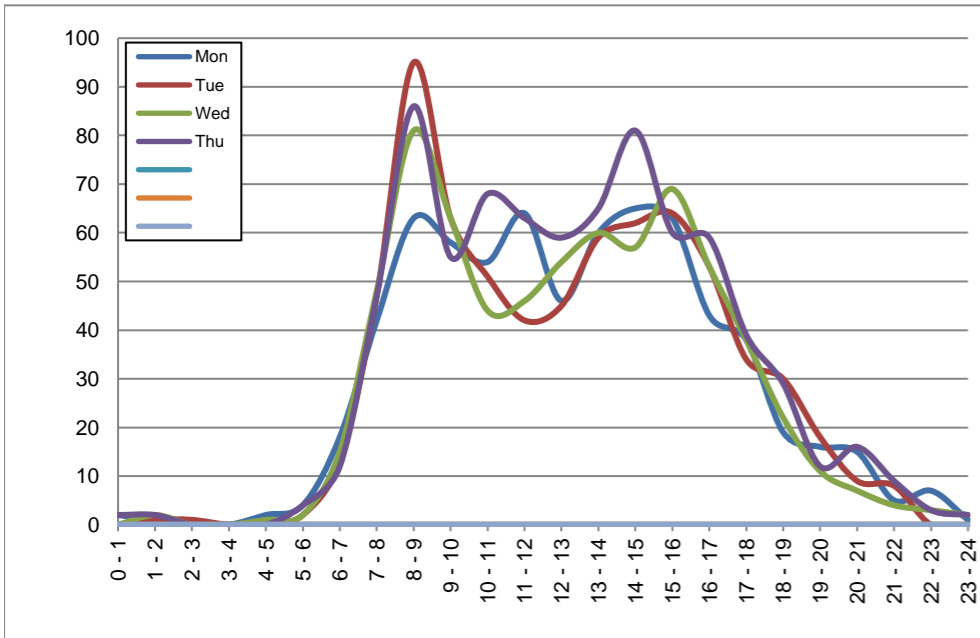
November 23, 2020 to November 26, 2020

**Hourly Volumes**

Time Period	Mon	Tue	Wed	Thu			
	Nov 23	Nov 24	Nov 25	Nov 26			
0 - 1	2	0	0	2			
1 - 2	1	1	2	2			
2 - 3	0	1	0	0			
3 - 4	0	0	0	0			
4 - 5	2	0	1	0			
5 - 6	4	2	2	4			
6 - 7	18	13	15	12			
7 - 8	42	47	48	47			
8 - 9	63	95	81	86			
9 - 10	58	63	63	55			
10 - 11	54	51	44	68			
11 - 12	64	42	46	63			
12 - 13	46	45	54	59			
13 - 14	60	59	60	65			
14 - 15	65	62	57	81			
15 - 16	63	64	69	60			
16 - 17	43	53	53	59			
17 - 18	38	34	38	39			
18 - 19	19	30	22	29			
19 - 20	16	18	11	12			
20 - 21	15	9	7	16			
21 - 22	5	8	4	9			
22 - 23	7	0	3	3			
23 - 24	1	0	2	2			
<b>Day Total</b>	<b>686</b>	<b>697</b>	<b>682</b>	<b>773</b>			

**15-Minute Volumes**

Time Start	Mon	Tue	Wed	Thu				Time Start	Mon	Tue	Wed	Thu			
	Nov 23	Nov 24	Nov 25	Nov 26					Nov 23	Nov 24	Nov 25	Nov 26			
0:00	2	0	0	1				12:00	13	12	19	13			
0:15	0	0	0	1				12:15	12	8	12	13			
0:30	0	0	0	0				12:30	9	8	9	14			
0:45	0	0	0	0				12:45	12	17	14	19			
1:00	0	0	0	0				13:00	16	12	17	12			
1:15	0	0	1	0				13:15	15	17	22	18			
1:30	0	1	1	2				13:30	12	12	12	14			
1:45	1	0	0	0				13:45	17	18	9	21			
2:00	0	0	0	0				14:00	15	8	14	21			
2:15	0	1	0	0				14:15	17	14	19	17			
2:30	0	0	0	0				14:30	17	20	14	16			
2:45	0	0	0	0				14:45	16	20	10	27			
3:00	0	0	0	0				15:00	17	23	24	16			
3:15	0	0	0	0				15:15	18	14	19	18			
3:30	0	0	0	0				15:30	16	17	14	13			
3:45	0	0	0	0				15:45	12	10	12	13			
4:00	1	0	0	0				16:00	10	15	17	18			
4:15	0	0	0	0				16:15	17	11	13	13			
4:30	0	0	1	0				16:30	9	20	13	14			
4:45	1	0	0	0				16:45	7	7	10	14			
5:00	1	1	0	1				17:00	11	9	13	12			
5:15	0	0	0	0				17:15	6	9	12	6			
5:30	2	0	0	0				17:30	12	10	6	15			
5:45	1	1	2	3				17:45	9	6	7	6			
6:00	0	1	1	2				18:00	2	8	4	11			
6:15	4	0	3	0				18:15	7	6	8	8			
6:30	5	1	3	2				18:30	7	12	6	6			
6:45	9	11	8	8				18:45	3	4	4	4			
7:00	10	6	8	4				19:00	3	3	3	3			
7:15	5	13	6	10				19:15	3	4	2	4			
7:30	16	11	11	17				19:30	2	5	4	3			
7:45	11	17	23	16				19:45	8	6	2	2			
8:00	16	20	19	15				20:00	3	3	5	5			
8:15	20	30	19	31				20:15	5	2	0	2			
8:30	15	18	19	17				20:30	5	3	1	5			
8:45	12	27	24	23				20:45	2	1	1	4			
9:00	19	19	12	17				21:00	2	0	2	2			
9:15	12	8	19	9				21:15	0	5	1	2			
9:30	12	17	14	14				21:30	1	1	1	3			
9:45	15	19	18	15				21:45	2	2	0	2			
10:00	10	15	10	23				22:00	2	0	2	1			
10:15	11	10	7	20				22:15	1	0	0	2			
10:30	15	14	15	11				22:30	1	0	1	0			
10:45	18	12	12	14				22:45	3	0	0	0			
11:00	18	13	18	17				23:00	0	0	0	0			
11:15	13	12	7	19				23:15	1	0	0	0			
11:30	15	7	11	8				23:30	0	0	2	1			
11:45	18	10	10	19				23:45	0	0	0	1			



Site notes:

# Vehicle Speed Summary

Saanich Engineering Department

Count Id: C0026-01

Filename: Garnet Rd between Cedar Hill Rd and Garnet Pl-Nov-2020.xlsm

**Location:** Garnet Rd between Cedar Hill Rd and Garnet Pl

Note:

Direction: **East-West**

Dates: **November 22, 2020 To November 27, 2020**

*Filtered data*

AVG. SPEED	<b>22</b> mph	<b>35</b> km/h
50 % SPEED	<b>22</b> mph	<b>36</b> km/h
85 % SPEED	<b>28</b> mph	<b>44</b> km/h
95 % SPEED	<b>30</b> mph	<b>49</b> km/h

Location Map



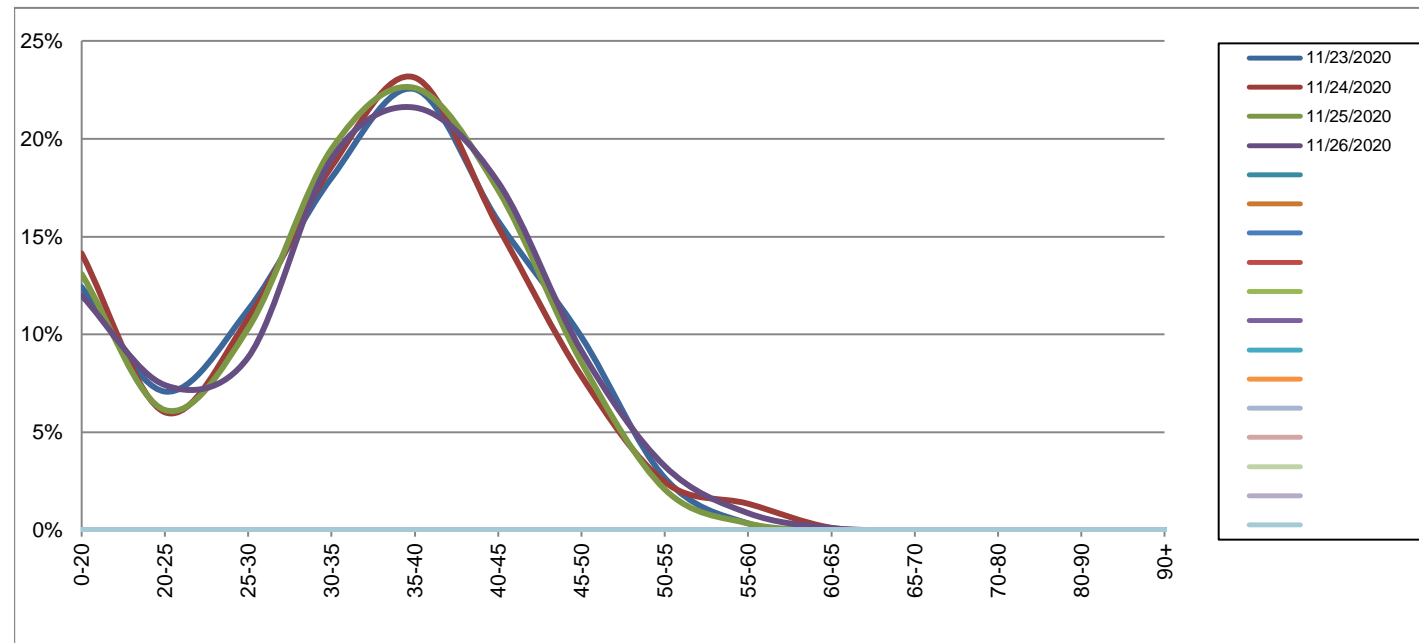
**Garnet Rd between Cedar Hill Rd and Garnet PI**

Westbound  
November 23, 2020 to November 26, 2020

Daily Speed Bin Percentages															Daily Speed Bin Volumes														Total	Avg.
Bin #	1	2	3	4	5	6	7	8	9	10	11	12	13	14	1	2	3	4	5	6	7	8	9	10	11	12	13	14	Volume	Speed
Bin Speeds	0-20	20-25	25-30	30-35	35-40	40-45	45-50	50-55	55-60	60-65	65-70	70-80	80-90	90+	0-20	20-25	25-30	30-35	35-40	40-45	45-50	50-55	55-60	60-65	65-70	70-80	80-90	90+		
11/23/2020	12.4%	7.1%	11.3%	18.0%	22.5%	15.8%	9.9%	2.7%	0.3%	0.0%	0.0%	0.0%	0.0%	0.0%	107	61	97	155	194	136	85	23	3	0	0	0	0	0	861	33
11/24/2020	14.1%	6.0%	10.8%	18.6%	23.1%	15.5%	7.9%	2.5%	1.4%	0.1%	0.0%	0.0%	0.0%	0.0%	115	49	88	151	188	126	64	20	11	1	0	0	0	0	813	33
11/25/2020	13.1%	6.1%	10.3%	19.5%	22.6%	17.4%	8.6%	2.1%	0.3%	0.0%	0.0%	0.0%	0.0%	0.0%	113	53	89	168	195	150	74	18	3	0	0	0	0	0	863	33
11/26/2020	12.0%	7.4%	8.8%	19.0%	21.6%	17.8%	9.2%	3.3%	0.9%	0.1%	0.0%	0.0%	0.0%	0.0%	110	68	81	174	198	163	84	30	8	1	0	0	0	0	917	34
<b>Total</b>	12.9%	6.7%	10.3%	18.8%	22.4%	16.6%	8.9%	2.6%	0.7%	0.1%	0.0%	0.0%	0.0%	0.0%	445	231	355	648	775	575	307	91	25	2	0	0	0	0	3454	33

**Speed Data Summary**

Bin #	1	2	3	4	5	6	7	8	9	10	11	12	13	14	Total
Bin Speeds	0-20	20-25	25-30	30-35	35-40	40-45	45-50	50-55	55-60	60-65	65-70	70-80	80-90	90+	
Survey Total	445	231	355	648	775	575	307	91	25	2	0	0	0	0	3454
% Total	12.9%	6.7%	10.3%	18.8%	22.4%	16.6%	8.9%	2.6%	0.7%	0.1%	0.0%	0.0%	0.0%	0.0%	100%
Accumulated %	12.9%	19.6%	29.8%	48.6%	71.0%	87.7%	96.6%	99.2%	99.9%	100.0%	100.0%	100.0%	100.0%	100%	
Inverse Accum. %	87.1%	80.4%	70.2%	51.4%	29.0%	12.3%	3.4%	0.8%	0.1%	0.0%	0.0%	0.0%	0.0%	0.0%	
Average Speed	33 KM/H														



Site notes:

**Garnet Rd between Cedar Hill Rd and Garnet PI**

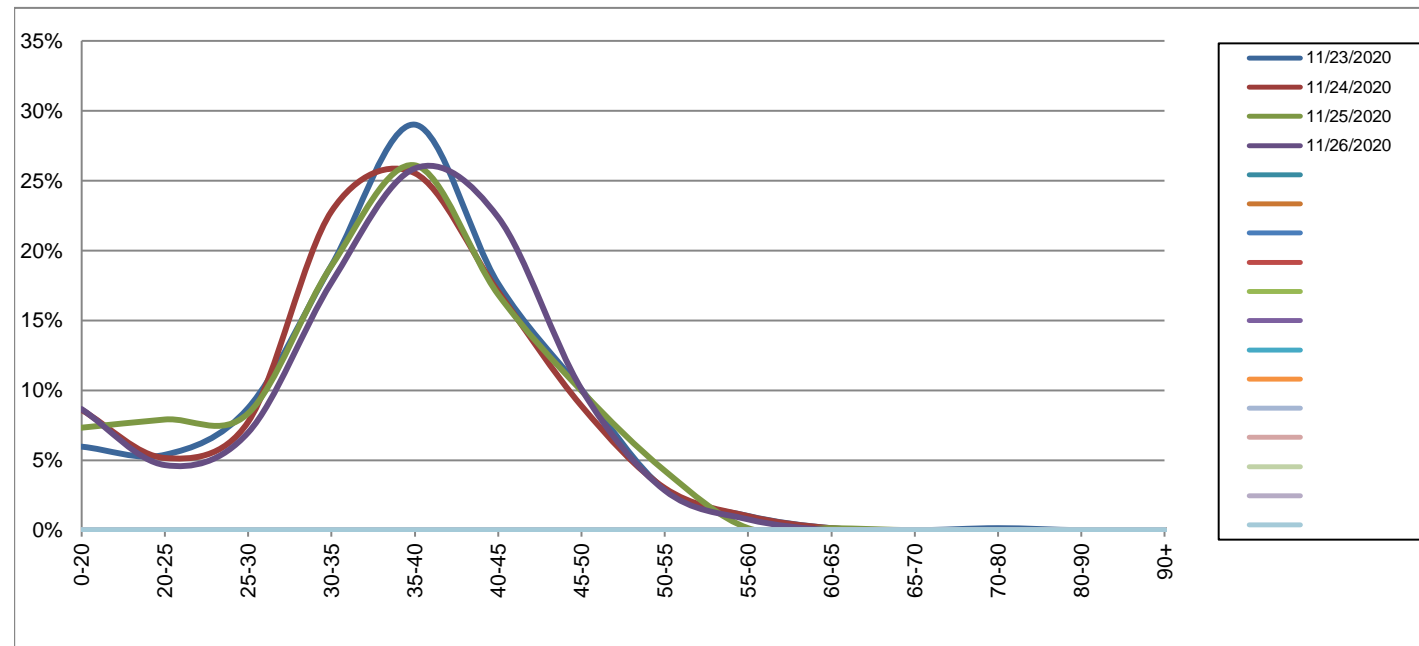
Eastbound

November 23, 2020 to November 26, 2020

Daily Speed Bin Percentages															Daily Speed Bin Volumes														Total	Avg. Speed
Bin #	1	2	3	4	5	6	7	8	9	10	11	12	13	14	1	2	3	4	5	6	7	8	9	10	11	12	13	14		
Bin Speeds	0-20	20-25	25-30	30-35	35-40	40-45	45-50	50-55	55-60	60-65	65-70	70-80	80-90	90+	0-20	20-25	25-30	30-35	35-40	40-45	45-50	50-55	55-60	60-65	65-70	70-80	80-90	90+		
11/23/2020	6.0%	5.4%	8.7%	19.0%	29.0%	17.6%	10.1%	2.9%	1.0%	0.1%	0.0%	0.1%	0.0%	0.0%	41	37	60	130	199	121	69	20	7	1	0	1	0	0	686	36
11/24/2020	8.6%	5.2%	7.7%	22.8%	25.5%	17.1%	8.9%	3.0%	1.0%	0.1%	0.0%	0.0%	0.0%	0.0%	60	36	54	159	178	119	62	21	7	1	0	0	0	0	697	35
11/25/2020	7.3%	7.9%	8.4%	18.9%	26.1%	16.9%	10.0%	4.3%	0.1%	0.1%	0.0%	0.0%	0.0%	0.0%	50	54	57	129	178	115	68	29	1	1	0	0	0	0	682	35
11/26/2020	8.7%	4.7%	7.0%	17.7%	25.9%	22.4%	10.1%	2.8%	0.8%	0.0%	0.0%	0.0%	0.0%	0.0%	67	36	54	137	200	173	78	22	6	0	0	0	0	0	773	36
<b>Total</b>	<b>7.7%</b>	<b>5.7%</b>	<b>7.9%</b>	<b>19.6%</b>	<b>26.6%</b>	<b>18.6%</b>	<b>9.8%</b>	<b>3.2%</b>	<b>0.7%</b>	<b>0.1%</b>	<b>0.0%</b>	<b>0.0%</b>	<b>0.0%</b>	<b>0.0%</b>	<b>218</b>	<b>163</b>	<b>225</b>	<b>555</b>	<b>755</b>	<b>528</b>	<b>277</b>	<b>92</b>	<b>21</b>	<b>3</b>	<b>0</b>	<b>1</b>	<b>0</b>	<b>0</b>	<b>2838</b>	<b>35</b>

**Speed Data Summary**

Bin #	1	2	3	4	5	6	7	8	9	10	11	12	13	14	Total
Bin Speeds	0-20	20-25	25-30	30-35	35-40	40-45	45-50	50-55	55-60	60-65	65-70	70-80	80-90	90+	
Survey Total	218	163	225	555	755	528	277	92	21	3	0	1	0	0	2838
% Total	7.7%	5.7%	7.9%	19.6%	26.6%	18.6%	9.8%	3.2%	0.7%	0.1%	0.0%	0.0%	0.0%	0.0%	100%
Accumulated %	7.7%	13.4%	21.4%	40.9%	67.5%	86.1%	95.9%	99.1%	99.9%	100.0%	100.0%	100.0%	100.0%	100%	
Inverse Accum. %	92.3%	86.6%	78.6%	59.1%	32.5%	13.9%	4.1%	0.9%	0.1%	0.0%	0.0%	0.0%	0.0%	0.0%	
Average Speed	35 KM/H														



Site notes:

**Garnet Rd between Cedar Hill Rd and Garnet PI**

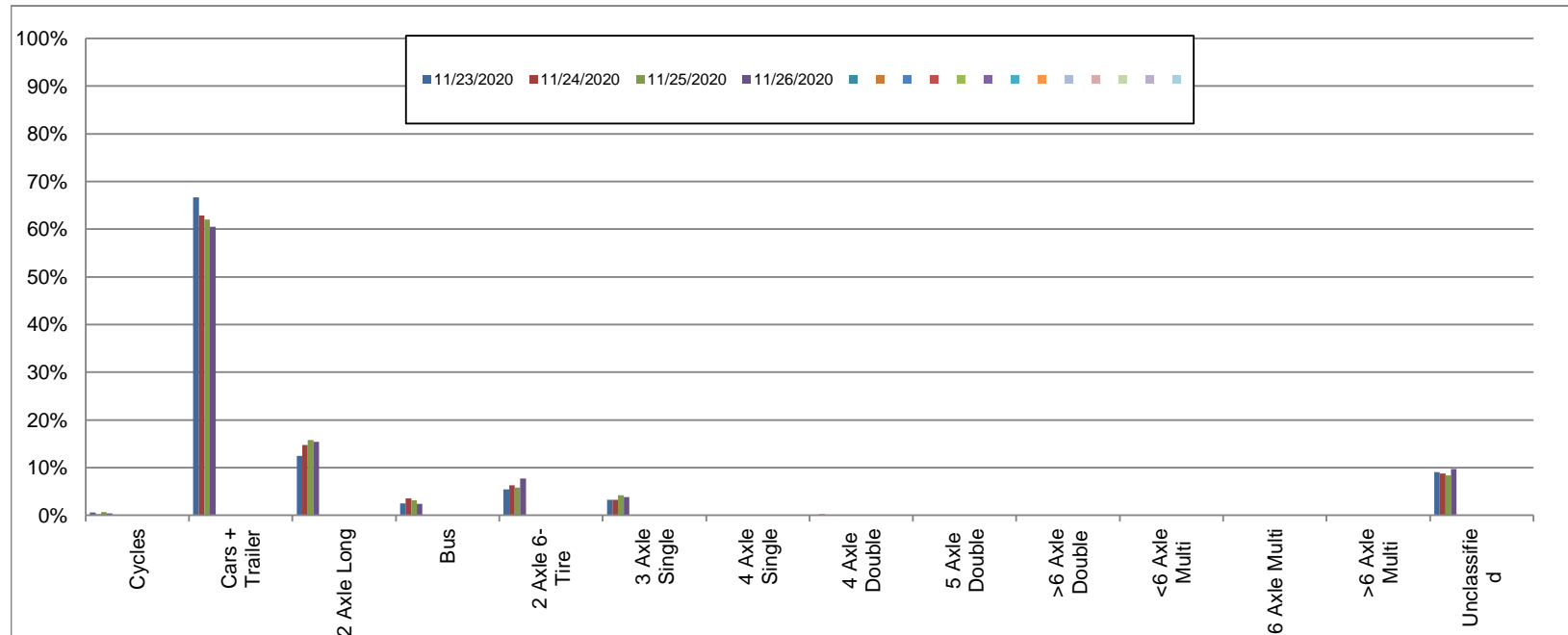
Westbound

November 23, 2020 to November 26, 2020

Daily Class Bin Percentages															Daily Class Bin Volumes															
Bin #	1	2	3	4	5	6	7	8	9	10	11	12	13	14	1	2	3	4	5	6	7	8	9	10	11	12	13	14	Total	
Bin Class	Cycles	Cars + Trailer	2 Axle Long	Bus	2 Axle 6-Tire	3 Axle Single	4 Axle Single	4 Axle Double	5 Axle Double	>6 Axle Double	<6 Axle Multi	6 Axle Multi	>6 Axle Multi	Unclassified	Cycles	Cars + Trailer	2 Axle Long	Bus	2 Axle 6-Tire	3 Axle Single	4 Axle Single	4 Axle Double	5 Axle Double	>6 Axle Double	<6 Axle Multi	6 Axle Multi	>6 Axle Multi	Unclassified	Total Volume	
11/23/2020	0.6%	66.7%	12.4%	2.4%	5.5%	3.3%	0.0%	0.0%	0.1%	0.0%	0.0%	0.0%	0.0%	9.1%	5	574	107	21	47	28	0	0	1	0	0	0	0	0	78	861
11/24/2020	0.2%	62.9%	14.8%	3.6%	6.3%	3.2%	0.0%	0.2%	0.1%	0.0%	0.0%	0.0%	0.0%	8.7%	2	511	120	29	51	26	0	2	1	0	0	0	0	0	71	813
11/25/2020	0.7%	62.0%	15.8%	3.1%	5.8%	4.2%	0.0%	0.0%	0.1%	0.0%	0.0%	0.0%	0.0%	8.3%	6	535	136	27	50	36	0	0	1	0	0	0	0	0	72	863
11/26/2020	0.4%	60.5%	15.4%	2.4%	7.7%	3.8%	0.0%	0.0%	0.0%	0.0%	0.0%	0.0%	0.0%	9.7%	4	555	141	22	71	35	0	0	0	0	0	0	0	0	89	917
<b>Total</b>	<b>0.5%</b>	<b>63.0%</b>	<b>14.6%</b>	<b>2.9%</b>	<b>6.3%</b>	<b>3.6%</b>	<b>0.0%</b>	<b>0.1%</b>	<b>0.1%</b>	<b>0.0%</b>	<b>0.0%</b>	<b>0.0%</b>	<b>0.0%</b>	<b>9.0%</b>	<b>17</b>	<b>2175</b>	<b>504</b>	<b>99</b>	<b>219</b>	<b>125</b>	<b>0</b>	<b>2</b>	<b>3</b>	<b>0</b>	<b>0</b>	<b>0</b>	<b>0</b>	<b>310</b>	<b>3454</b>	

**Class Data Summary**

Bin #	1	2	3	4	5	6	7	8	9	10	11	12	13	14	Total
Bin Class	Cycles	Cars + Trailer	2 Axle Long	Bus	2 Axle 6-Tire	3 Axle Single	4 Axle Single	4 Axle Double	5 Axle Double	>6 Axle Double	<6 Axle Multi	6 Axle Multi	>6 Axle Multi	Unclassified	Total Volume
<b>Survey Total</b>	17	2175	504	99	219	125	0	2	3	0	0	0	0	310	3454
<b>% Total</b>	0.5%	63.0%	14.6%	2.9%	6.3%	3.6%	0.0%	0.1%	0.1%	0.0%	0.0%	0.0%	0.0%	9.0%	100%
<b>Accumulated %</b>	0.5%	63.5%	78.1%	80.9%	87.3%	90.9%	90.9%	90.9%	91.0%	91.0%	91.0%	91.0%	91.0%	100.0%	
<b>Inv. Accum. %</b>	99.5%	36.5%	21.9%	19.1%	12.7%	9.1%	9.1%	9.1%	9.0%	9.0%	9.0%	9.0%	9.0%	0.0%	



**Classification Descriptions**

Bin #	Bin Description
1	Motorcycles
2	Passenger cars, including those with recreational trailers
3	2-axle pick-ups, vans, and RVs, including those with recreational trailers
4	Buses
5	2-axle, 6-tire single units
6	3-axle single units
7	4-axle single units
8	3-axle or 4-axle double unit
9	5-axle double unit
10	6-, 7-, or 8-axle double unit
11	5-axle multiple unit
12	6-axle multiple unit
13	7-or-more-axle multiple unit
14	Vehicles that could not be classified

Site notes:



**Garnet Rd between Cedar Hill Rd and Garnet PI**

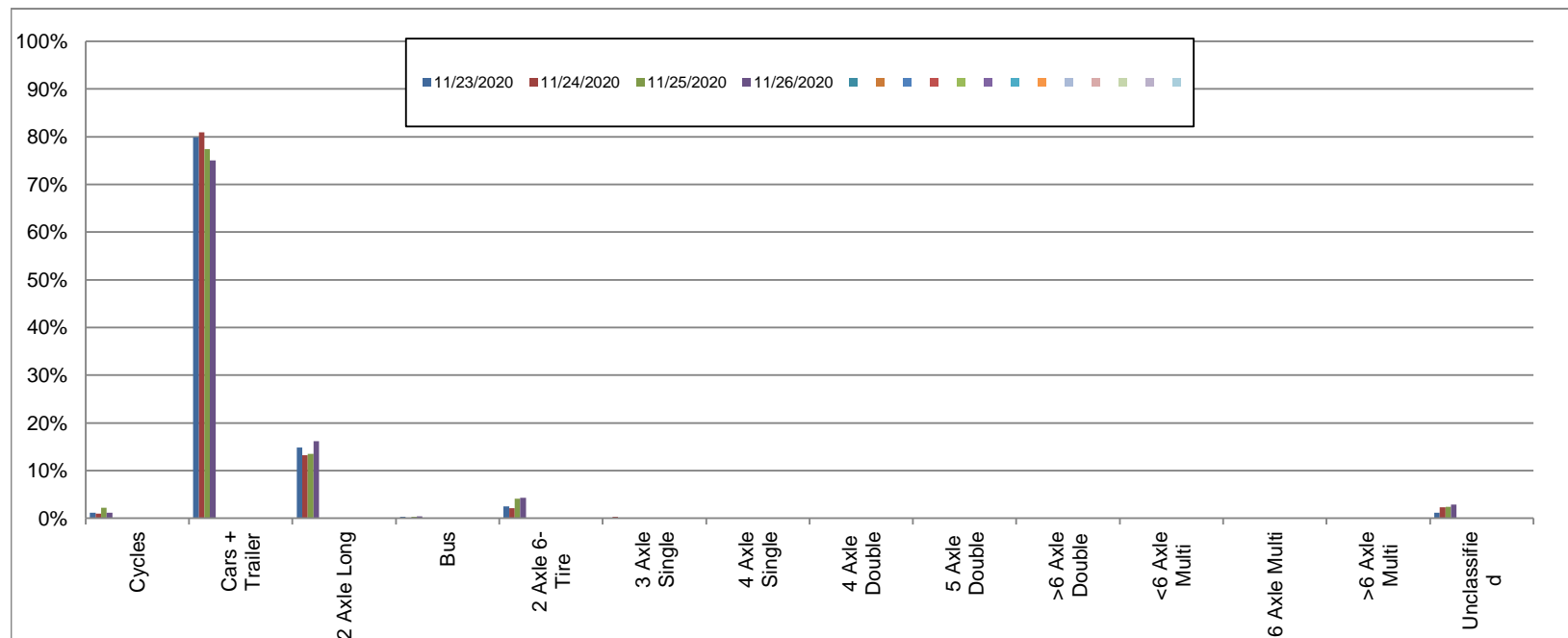
Eastbound

November 23, 2020 to November 26, 2020

Daily Class Bin Percentages															Daily Class Bin Volumes															
Bin #	1	2	3	4	5	6	7	8	9	10	11	12	13	14	1	2	3	4	5	6	7	8	9	10	11	12	13	14	Total Volume	
Bin Class	Cycles	Cars + Trailer	2 Axle Long	Bus	2 Axle 6-Tire	3 Axle Single	4 Axle Single	4 Axle Double	5 Axle Double	>6 Axle Double	<6 Axle Multi	6 Axle Multi	>6 Axle Multi	Unclassified	Cycles	Cars + Trailer	2 Axle Long	Bus	2 Axle 6-Tire	3 Axle Single	4 Axle Single	4 Axle Double	5 Axle Double	>6 Axle Double	<6 Axle Multi	6 Axle Multi	>6 Axle Multi	Unclassified		
11/23/2020	1.2%	79.9%	14.9%	0.3%	2.5%	0.0%	0.0%	0.0%	0.1%	0.0%	0.0%	0.0%	0.0%	1.2%	8	548	102	2	17	0	0	0	0	1	0	0	0	0	8	686
11/24/2020	1.0%	80.9%	13.2%	0.0%	2.2%	0.3%	0.0%	0.1%	0.0%	0.0%	0.0%	0.0%	0.0%	2.3%	7	564	92	0	15	2	0	1	0	0	0	0	0	0	16	697
11/25/2020	2.2%	77.4%	13.5%	0.3%	4.1%	0.0%	0.0%	0.1%	0.0%	0.0%	0.0%	0.0%	0.0%	2.3%	15	528	92	2	28	0	0	1	0	0	0	0	0	0	16	682
11/26/2020	1.2%	75.0%	16.2%	0.4%	4.3%	0.0%	0.0%	0.1%	0.0%	0.0%	0.0%	0.0%	0.0%	2.8%	9	580	125	3	33	0	0	1	0	0	0	0	0	0	22	773
<b>Total</b>	1.4%	78.2%	14.5%	0.2%	3.3%	0.1%	0.0%	0.1%	0.0%	0.0%	0.0%	0.0%	0.0%	2.2%	39	2220	411	7	93	2	0	3	1	0	0	0	0	62	2838	

**Class Data Summary**

Bin #	1	2	3	4	5	6	7	8	9	10	11	12	13	14	Total Volume
Bin Class	Cycles	Cars + Trailer	2 Axle Long	Bus	2 Axle 6-Tire	3 Axle Single	4 Axle Single	4 Axle Double	5 Axle Double	>6 Axle Double	<6 Axle Multi	6 Axle Multi	>6 Axle Multi	Unclassified	Total Volume
<b>Survey Total</b>	39	2220	411	7	93	2	0	3	1	0	0	0	0	62	2838
<b>% Total</b>	1.4%	78.2%	14.5%	0.2%	3.3%	0.1%	0.0%	0.1%	0.0%	0.0%	0.0%	0.0%	0.0%	2.2%	100%
<b>Accumulated %</b>	1.4%	79.6%	94.1%	94.3%	97.6%	97.7%	97.7%	97.8%	97.8%	97.8%	97.8%	97.8%	97.8%	100.0%	
<b>Inv. Accum. %</b>	98.6%	20.4%	5.9%	5.7%	2.4%	2.3%	2.3%	2.2%	2.2%	2.2%	2.2%	2.2%	2.2%	0.0%	



**Classification Descriptions**

Bin #	Bin Description
1	Motorcycles
2	Passenger cars, including those with recreational trailers
3	2-axle pick-ups, vans, and RVs, including those with recreational trailers
4	Buses
5	2-axle, 6-tire single units
6	3-axle single units
7	4-axle single units
8	3-axle or 4-axle double unit
9	5-axle double unit
10	6-, 7-, or 8-axle double unit
11	5-axle multiple unit
12	6-axle multiple unit
13	7-or-more-axle multiple unit
14	Vehicles that could not be classified

Site notes: